

PEC 40

Crimping station for ferrule processing

- Very high output
- Particularly large bowl feeder with practical loading hatch
- Comprehensive software integration in Schleuniger's fully automatic crimping machines
- Optimum crimping by adapting the crimp force to the respective cross-section
- Ideal area of application in control cabinet construction

STATIONS

PEC 40

Concept

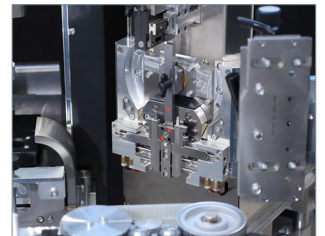
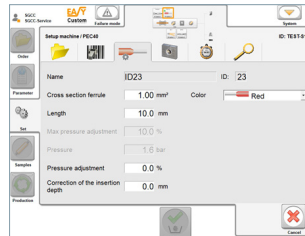
Short delivery times and low manufacturing costs are crucial, especially in control cabinet construction. With the PEC 40, Schleuniger offers a crimping station for fully automatic wire processing machines that satisfies these demands. With a cycle time of less than one second, the PEC 40 achieves a particularly high output and significant time savings when compared to conventional wire assembly.

Color-coded interchange parts that can be replaced without any tools, reduce setup times, and virtually eliminate handling errors.

The PEC 40 is seamlessly integrated in the CrimpCenter HMI, and conveniently delivers all relevant production parameters. The ferrules are displayed in the corresponding standard color, which makes it easier for the operator to visually check the production orders. The crimp force is adapted to the respective conductor cross-section thanks to full software integration. The outcome is an optimum crimp.

Special features

- Processes loose insulated ferrules with a length of 6, 8, 10, 12 mm
- Toolless setup
- Consistent color concept for error-free and fast setup
- Large bowl feeder with loading hatch
- Packing quantities of ferrules matched to filling quantity
- Quick-feed function
- Full software integration in Schleuniger CrimpCenter
- Easy visual check via CrimpCenter HMI
- Square crimp for optimum contact surface in the terminal clamp
- Crimp monitoring through software-based pressure and crimp lever stroke monitoring
- Maximum precision through electric drives
- Durable thanks to robust design and high-quality components
- Optional case with interchange parts



Reliable and fast processing of different ferrules thanks to software-controlled crimp force adjustment to the respective conductor cross-section.

Color-coded interchange parts in accordance with the standard specifications facilitate and accelerate correct setup.

The graphic HMI provides the operator with a clear and well-arranged display of all relevant information. The ferrules are displayed in their corresponding standard color.

The crimp station's open architecture allows additional visual checks during crimping.

Technical Specifications	
Raw Material Diameter	max. 4.7 mm (with insulation) / 2.8 mm (without insulation)
Conductor Cross-section	0.5 to 4.0 mm ²
Optional Tool Sets	0.5 to 0.75 mm ² 1.0 to 1.5 mm ² 2.5 to 4.0 mm ²
Crimp Shape	Square according to DIN 46228-4
Cycle Time	< 1 second
Dimensions (l x w x h)	475 x 180 x 540 mm (without bowl feeder)
Weight	50 kg (without bowl feeder)
Power Supply	24 V DC
Compressed Air Connection	6.5 bar compressed air (filtered, dried, non-lubricated)
Interfaces	2 x RJ45, D-SUB, pneumatic, 24 V DC
CE Conformity	The PEC 40, adapted to the CrimpCenter, complies with the CE and EMC machinery directives relating to mechanical and electrical safety and electromagnetic compatibility.
Important Note	Schleuniger recommends submitting cable samples in cases where there are doubts about the processing capabilities of a particular machine.

To Be Precise.